



WORLDWIDE ELECTRIC MOTOR DATA SHEET



PEWWE25-12-324T

HORSEPOWER	25		
RPM / POLES	1200 / 6		
VOLTAGE / PHASE	230 / 460 V / 3		
FRAME	324T		
ENCLOSURE / DEGREE OF PROTECTION	TEFC / IP54		
FREQUENCY	60 HZ Suitable For 50 HZ Operation With 1.0 SF		
FULL LOAD SPEED	1190 RPM		
SERVICE FACTOR	1.15		
INSULATION CLASS	F		
FULL LOAD AMPS; 230 / 460	67.5 / 33.7 A Usable On 208 V At 74.6 A		
LOCKED ROTOR AMPS (STARTING); 230 / 460	444 / 222 A		
NO LOAD CURRENT	38.4 / 19.2 A		
NEMA CODE LETTER	H		
EFFICIENCY / POWER FACTOR	<u>LOAD</u>	<u>EFF.</u>	<u>P.F.</u>
	100%	93.0%	0.74
	75%	92.8%	0.67
	50%	91.8%	0.54
DUTY CYCLE	CONTINUOUS		
TORQUE	<u>FULL LOAD</u>	<u>LRT</u>	<u>BDT</u>
	110 lb.ft.	180%	280%
SLIP	0.83%		
NEMA DESIGN	A		
MOMENT OF INERTIA	9.2 lb.ft. ²		
SOUND PRESSURE LEVEL	81 dB(A)		
MAX. TIME LOCKED ROTOR (Hot)	18Seconds		
MAX. AMBIENT TEMPERATURE	40° C		
MAX. ELEVATION	3300 Ft. Above Sea Level		
TEMPERATURE RISE (At Full Load)	80° C		
DE BEARING	6312C3		
ODE BEARING	6311C3		
REGREASING INT. - DE BEARING	12,400 Hours (0.75 oz.)		
REGREASING INT. - ODE BEARING	12,700 Hours (0.64 oz.)		
GREASE TYPE	Mobil Polyrex EM		
MOUNTING	F1 (F2 Suitable)		
ROTATION	Bi-Directional		
C-FLANGE	PEW320TC		
D-FLANGE	PEW320TD		
SHAFT MATERIAL	1045 Carbon Steel		
CONNECTION DIAGRAM	230 / 460 V - 12 Lead Δ		
APPROXIMATE WEIGHT	595 lbs.		
INVERTER RATING	4:1 CT / 10:1 VT PWM Type		



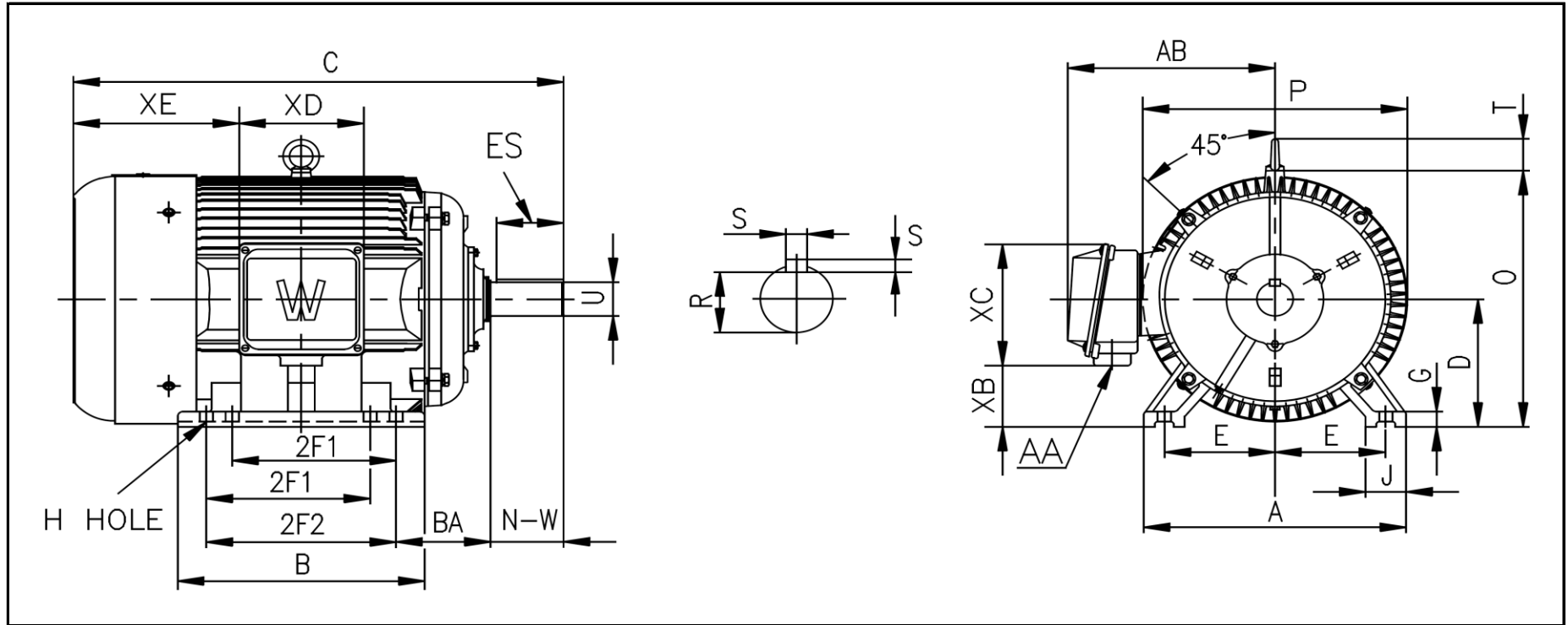
CC006A





WORLDWIDE ELECTRIC MOTOR DRAWING

PEWWE-324T



DIMENSIONS - INCHES

MOUNTING					A	B	C	D	G	J	P	O	T	AB
E	2F1	2F2	H	BA										
6.25	10.5	12	0.66	5.25	16	15.5	30.63	8	0.984	2.76	15.75	15.91	2.44	13.4

KEY		KEYSET	SHAFT		TERMINAL BOX				
S	ES	R	N-W	U	AA	XB	XC	XD	XE
0.5	3.91	1.845	5.25	2.125	2	2.64	10.55	8.98	9.65